

# FOLKLANDS



SKYLINE COURT  
PARK LANE

PARK LANE, CENTRAL CROYDON  
MONTHLY RENTAL OF £1,250





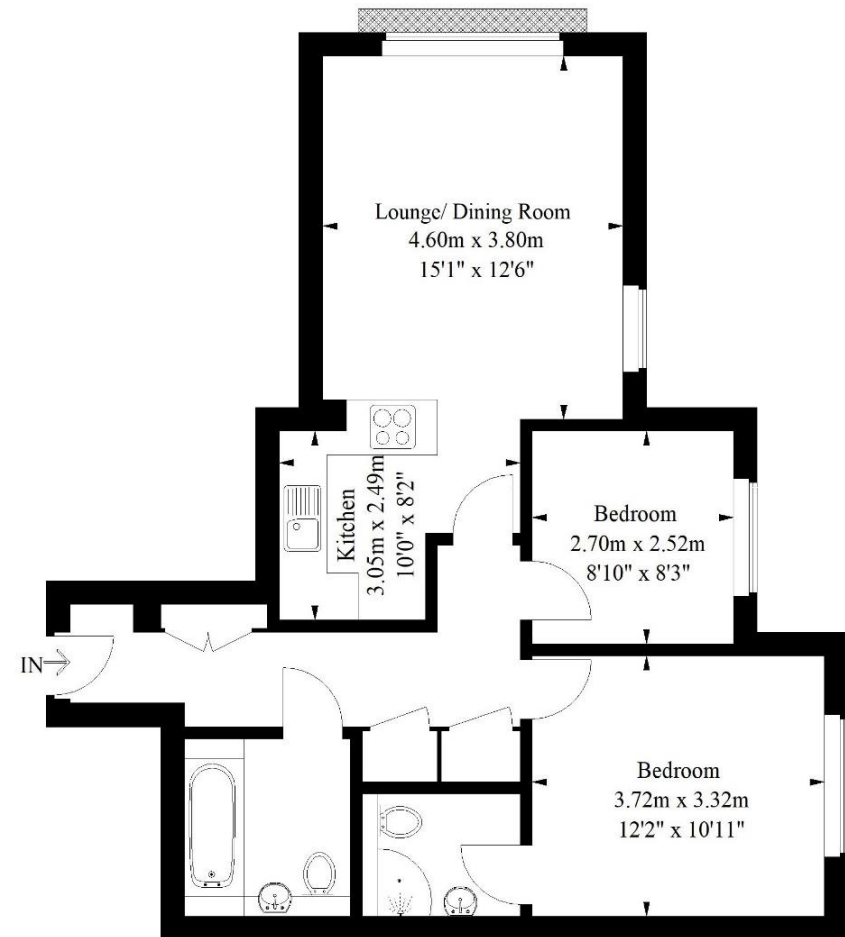






# Park Lane, Croydon

Approximate Gross Internal Area  
63.9 sq m / 688 sq ft



## Fifth Floor

Illustration for identification purposes only, measurements are approximate, not to scale.  
FloorplansUsketch.com © 2019 (ID 537141)

INFO@FOLKLANDS.COM - 020 8686 0002

362 BRIGHTON ROAD - SOUTH CROYDON - CR2 6AL

- ❖ AVAILABLE IMMEDIATELY
- ❖ TWO BEDROOM/ TWO BATHROOM
- ❖ PART-FURNISHED
- ❖ 5TH FLOOR WITH FAR REACHING VIEWS
- ❖ GATED PARKING SPACE
- ❖ CONCIERGE SERVICE
- ❖ 0.4 MILES FROM EAST CROYDON TRAIN STATION
- ❖ ULTRA CONVENIENT LOCATION
- ❖ AMPLE LIVING SPACE
- ❖ EPC EER C



**\*\* Available Immediately \*\*** A spacious two bedroom apartment situated on the 5th floor of this landmark apartment complex, conveniently located in the heart of central Croydon, and only 0.4 miles from East Croydon train station & 0.3 miles from the local tram stop.

Offered to the market as part-furnished, this well presented property benefits from far reaching views, a concierge service, access to a gated parking bay, and has ample living space.

The accommodation comprises master bedroom with en-suite shower room, bedroom two, a three piece bathroom suite, a fitted kitchen, ample storage in the hallway, a stylish open plan fitted kitchen, and a spacious lounge/ dining room with Juliette balcony.

Furthermore, this property sits moments away from the plethora of shops, bars & restaurants in central Croydon and within easy reach of a number of local gyms. We feel that this property would make an ideal home for a professional couple who commute into London for work.

